

"RASKAT" static road rollers



RC-10DD

Operating Weight (Without Ballast)

10,000 kg

Engine

MMZ D-243 57,4 kW/
Kubota V-3800-DI-T-E2B
70.6 kW @ 2600 rpm

Wheelbase

3400 mm

JSC RASKAT

152934, Russia, Yaroslavl region,
Rybinsk, ul. Labor, 2, Russia,
Telephone: +74855 203 234;
Email: packat@bk.ru
www.oao-raskat.ru



- High productivity
- Exclusive compaction evenness
- High reliability
- Easy to maintain

- High maneuverability
- Economical efficiency
- Highly safe
- Ease of control

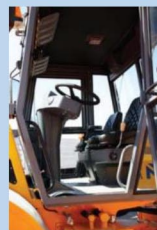
- Environmentally friendly
- Comfortable work environment to operators

"RASKAT" static road rollers



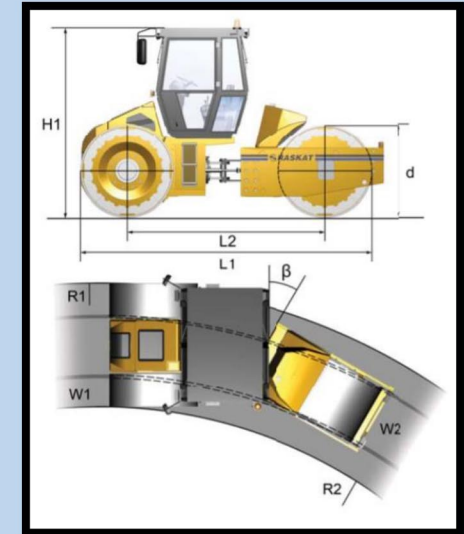
TECHNICAL SPECIFICATIONS

Parameter	Parameter Value
Operational mass (without ballast), kg	10000
Speed, km/h:	
Operational	10
Traveling	20
Drum diameter, mm	1600
Front drum width, mm	570
Rear drum width, mm	1060
Width of compactable band, mm	2100
Front/Rear linear pressure, N/cm	438/470
Roll stability angle, deg.	15
Gradeability, %	40
Minimum turn radius along the track outline, m	6.4
Reciprocal turn of semi-frames in vertical transverse plane, deg.	8
Clearance, mm	400
Medium time for interrupted operation without refilling, h	10
Tank capacity, L:	
Fuel	130
Hydraulic	90
Water	800



OVERALL DIMENSIONS

Parameter	Parameter Value
Overall Length (L1), mm	5100
Overall Width, mm	2100
Overall Height with cabin (H1), mm	3050
Drum Diameter (d), mm	1600
Front Drum Width (W1), mm	570
Rear Drum Width (W2), mm	1060
Wheelbase (L2), mm	3400
Inner Turning Radius, mm	4300
Outer Turning Radius (R1), mm	6400
Turn Angle (β), deg	30



STANDARD SET OF EQUIPMENT

- Cabin with heating, ventilation and dust protection, two doors, panoramic window, flashing beacon, outer sun screen, outer rear view mirrors, front and rear window wipers
- Warning lights for traveling by road
- Working front and rear headlights
- Adjustable scraper
- Remote «ground» switch-on
- Adjustable work seat
- Pressurized water sprinkler system
- Sound alarm indicators for engine temperature, oil pressure
- Travel drive pump - PSM (RUSSIA)
- Travel drive hydraulic motor - PSM
- 12 V heavy duty battery with alternator
- Hydrostatic transmission with smooth power transmission
- Hydraulic controlled power steering
- Hydrostatic service brake
- Spring applied, hydraulically released parking brake

ENGINE SPECIFICATIONS

MMZ D-243/Kubota V-3800-DI-T-E2B
Water cooled, 4 stoke, diesel engine

Parameter	Parameter Value
Power, kW	57.4 / 70.6
RPM	2200 / 2600
Fuel Consumption for one hour of engine running, L	13