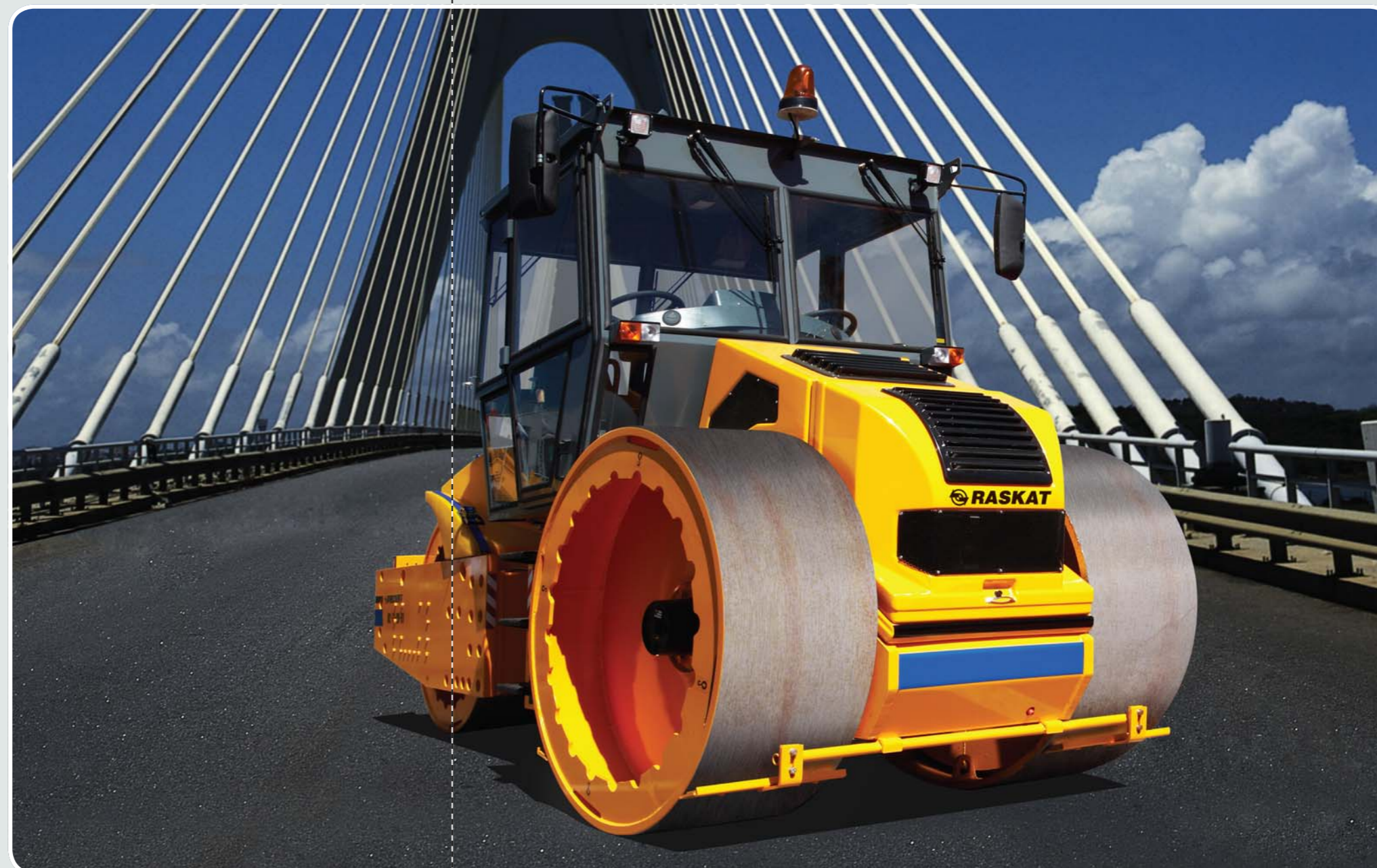


"RASKAT" static road rollers

JSC RASKAT

152934, Russia, Yaroslavl region, Rybinsk, ul. Labor, 2, Russia,
 Telephone: +74855 203 234; Email: packat@bk.ru
 www.oao-raskat.ru

■ RC-13DD



- High productivity
- Exclusive compaction evenness

- High maneuverability
- Economical efficiency

- Environmentally friendly
- Comfortable work environment to operators

- High reliability
- Easy to maintain

- Highly safe
- Ease of control

Static road rollers

Static three-drum road roller RC-13DD

Technical specifications

Parameter	Parameter value
Operational mass, kg	13000
Speed, km/h (not less than): operational traveling	10 15
Drum diameter, mm	1500
Front drum width, mm	570
Rear drum width, mm	1060
Width of compactable band, mm	2100
Front/Rear linear pressure, N/cm	570/610
Roll stability angle, deg., (not less than)	15
Gradeability, %, (not less than)	40
Minimum turn radius along the track outline, m, (at most)	6,4
Reciprocal turn of semi-frames in vertical transverse plane, deg., (not less than)	8
Clearance, mm, (not less than)	350
Medium time for uninterrupted operation without fuel refilling, h, (not less than)	10
Adherent fuel (water) tank capacity, l, (not less than)	800

Overall dimensions

Parameter	Parameter value
L, mm	5000
Width, mm	2100
Road roller height during transportation, mm	3000±100
Road roller height without cabin, mm	2200±100

Type of engine

Water-cooled four-stroke diesel engine Kubota V-3800-DI-T-E2B	
Engine power, kW/ fuel consumption for one hour of engine running, l	70.6/13



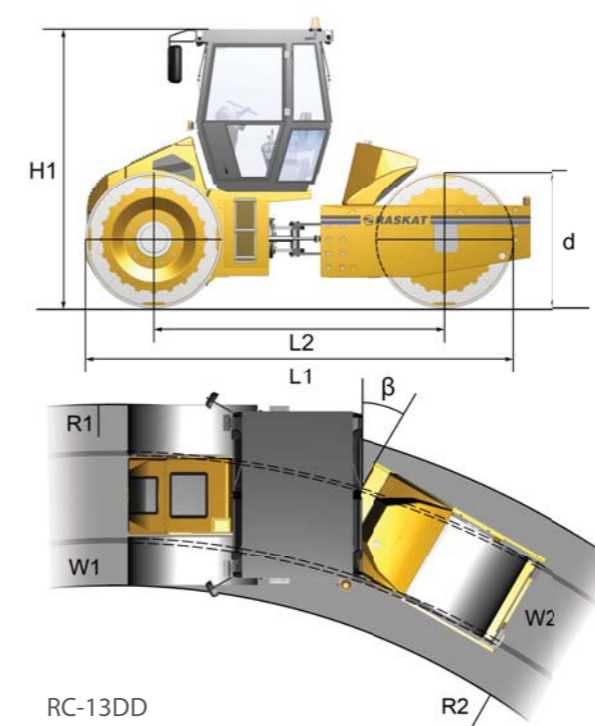
Equipment for road roller RC-13DD

Standard set of equipment

- Cabin with heating, ventilation and dust protection, two doors, panoramic window, flashing beacon, outer sun screen, outer rear view mirrors, front and rear window wipers
- Warning lights for traveling by road
- Working front and rear headlights
- Adjustable scraper
- Remote «ground» switch-on
- Adjustable work seat
- Sound alarm indicators for engine temperature, oil pressure
- Indicator for engine rpm and on-vehicle mains power voltage
- Indicator for running speed and distance traveled
- Indicators for hydraulic oil temperature and availability, fuel availability
- Place for radio set installation and wiring
- Sun screen
- Pressurized spray system for drum with interval regulation
- Travel drive pump - PSM 416.0.90
- Travel drive hydraulic motor - PSM 303.4.56.501.000.7- PSM 310.4.56.00.06

Auxiliary set of equipment

- Indicator for adherent fluid reserves
- Multi-function display for road roller operation monitoring and diagnostics
- Indicator for degree of compaction
- Radio recorder
- Electrically driven sun screen
- Cabin air conditioning system



Length (L1), mm	5000
Base (L2), mm	3350
Height with cabin (H1), mm	3000
Drum diameter (d), mm	1500
Turn angle (β)	30
Outer turn radius with/ without displacement (R1), mm	6400
Inner turn radius with/ without displacement (R2), mm	4300
Front drum width (W1), mm	570
Rear drum width (W2), mm	1000